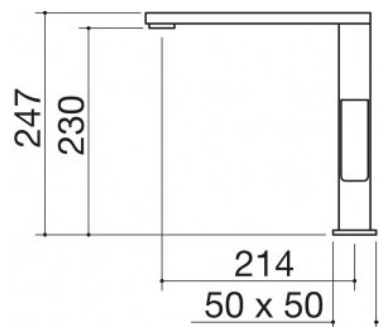


**Lab In mixer tap**



- ceramic disc cartridge
- tap rotation: 360°
- tap base: 50x50 mm
- tap hole: ∅, 35 mm



**Codici:**

SATIN STAINLESS STEEL FINISH

cod: 1RUBMLBI

CHROMED

cod: 1RUBMLBIC

**Plus:**



Tap Rotation